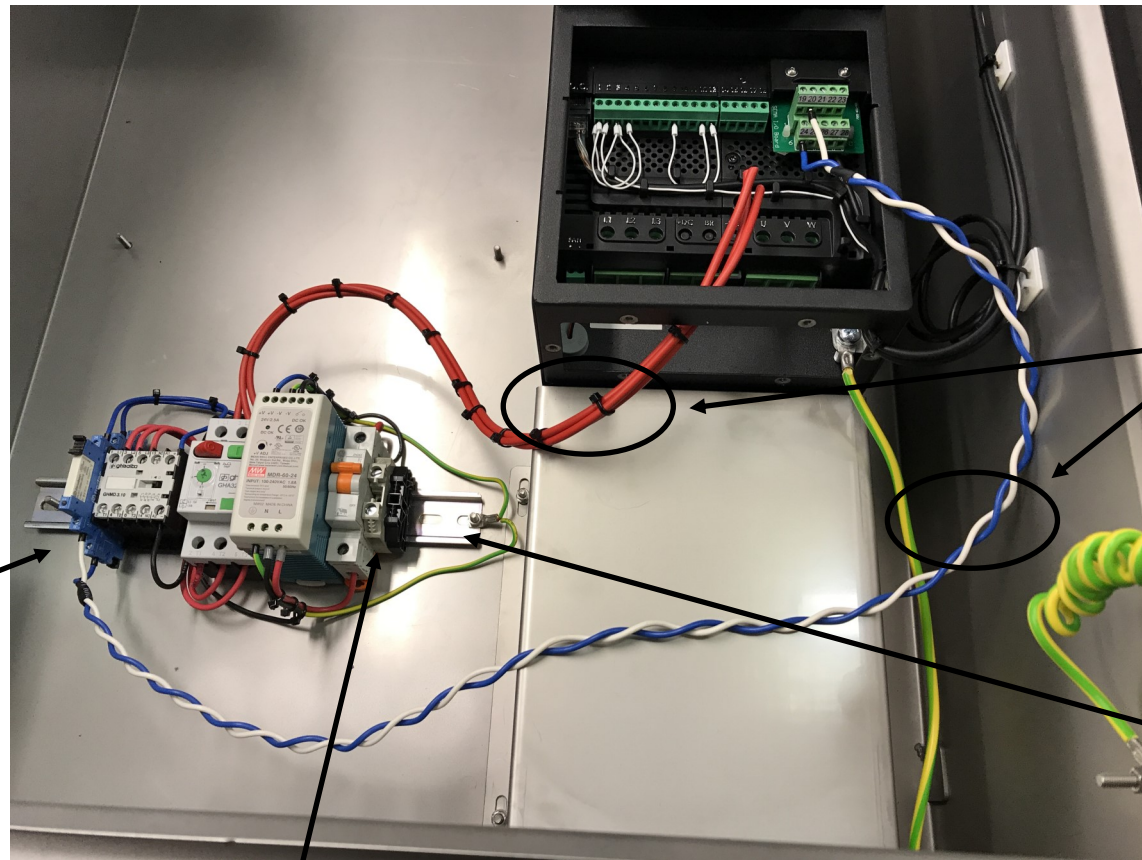


HI-TECH

enviro solutions

DAIRY EFFLUENT SPECIALISTS

Stirrer Kit Installation



Mount the stirrer kit to the din rail mounting studs provided in the cabinet

Run the three red wires and the blue and white twisted wires into the VSD's terminal box.

Be sure to fit the earth crimp lug under the din rail securing nut.

A neutral must be connected to this terminal

Please turn over



Connect the 3 red wires to L1, L2 and L3 together with the incoming phase wires for the VSD



Connect the white wire to terminal 20 and the blue wire to terminal 24.

Please turn over