

**Sema** Ltd.

## Milk Sweep Controller 230Vac

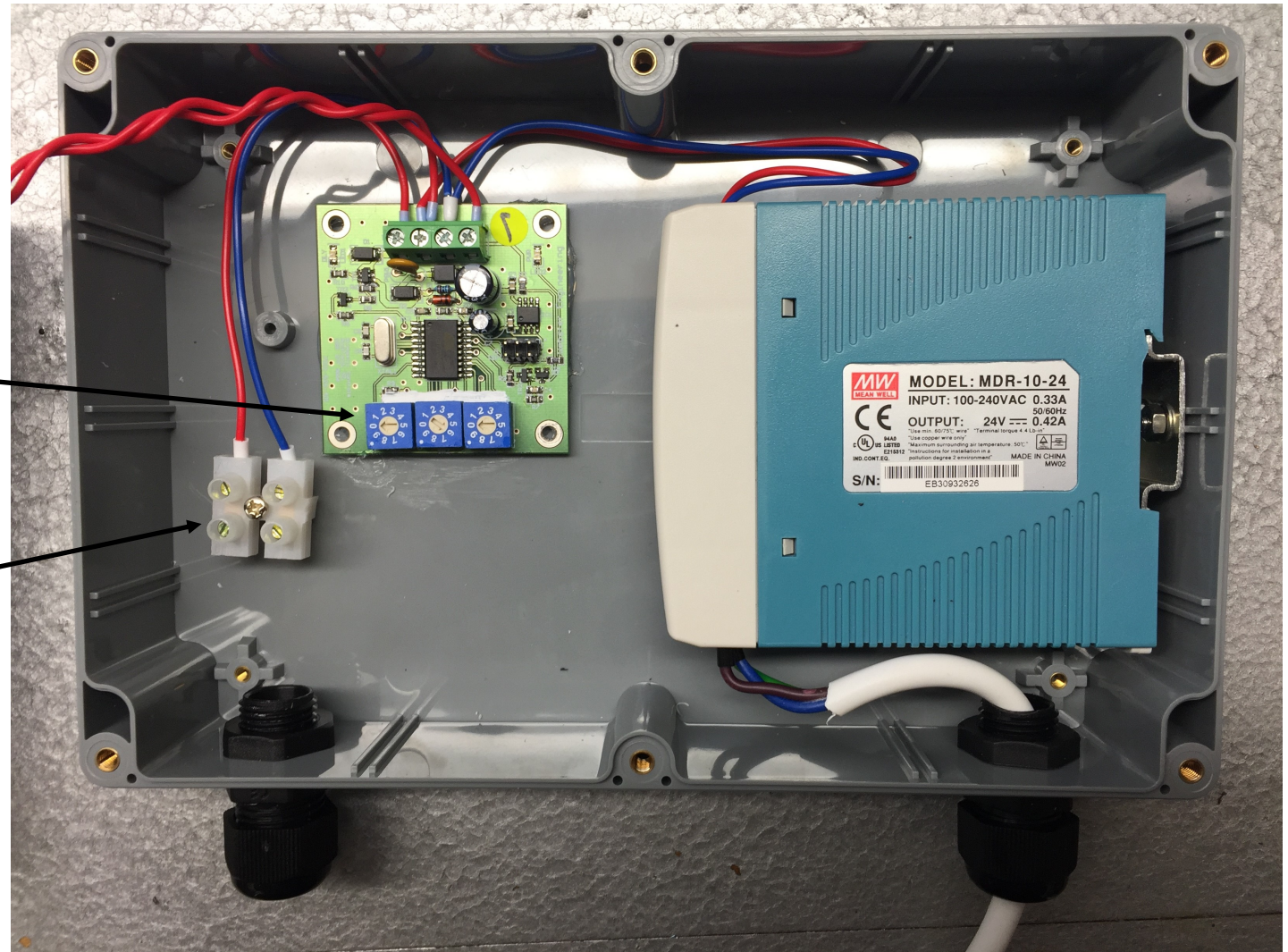
Port 1 on the solenoid is the compressed air inlet,  
port 2 is the milk sweep.

To cancel before the time has expired **HOLD** the  
button for 3 seconds.

These three dials set the time  
that the milk sweep operates  
for. Maximum is 999 seconds.

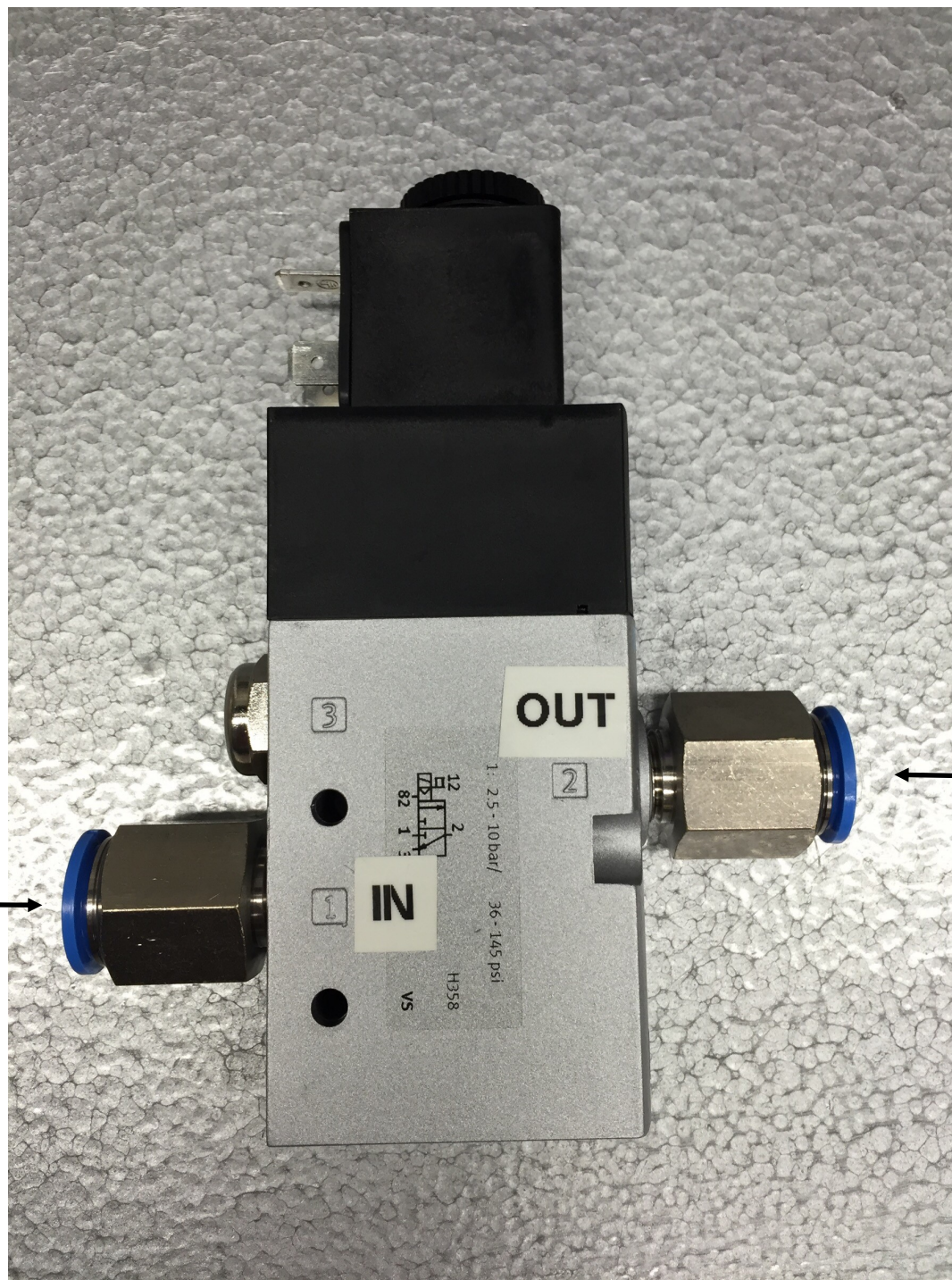
When you receive the unit the  
time will be set to 60 seconds

Connect the two solenoid wires  
here. It doesn't matter which  
way round they go and there is  
no need to use screened cable.





Compressed air in



To milk recovery  
unit valve

